



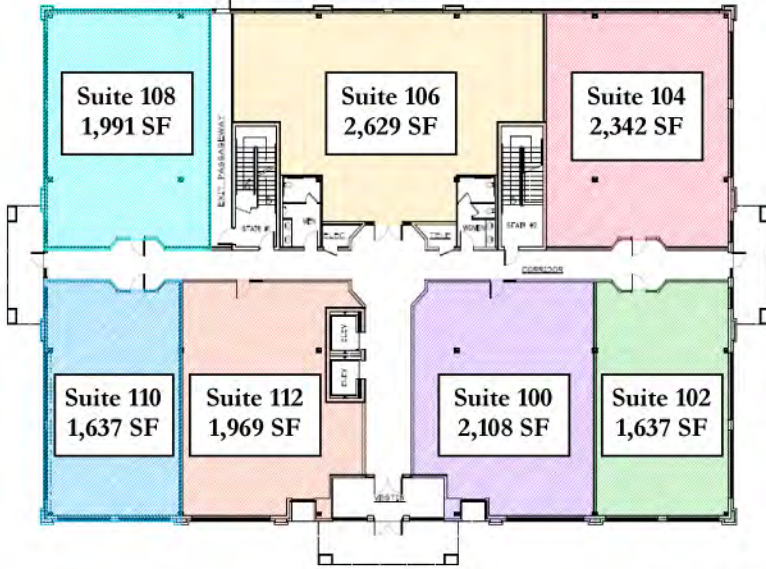
Building Specifications

- ◆ 37,000 SF of condos—1st and 2nd floors
- ◆ 3 story Class A office condominiums
- ◆ Easy access to I-95 and I-695
- ◆ Zoning: ML
- ◆ Parking: 4.9 per 1,000 SF
- ◆ Walking distance to the Avenue at White Marsh
- ◆ Tenant construction allowance \$25.00 psf
- ◆ Free Space Planning

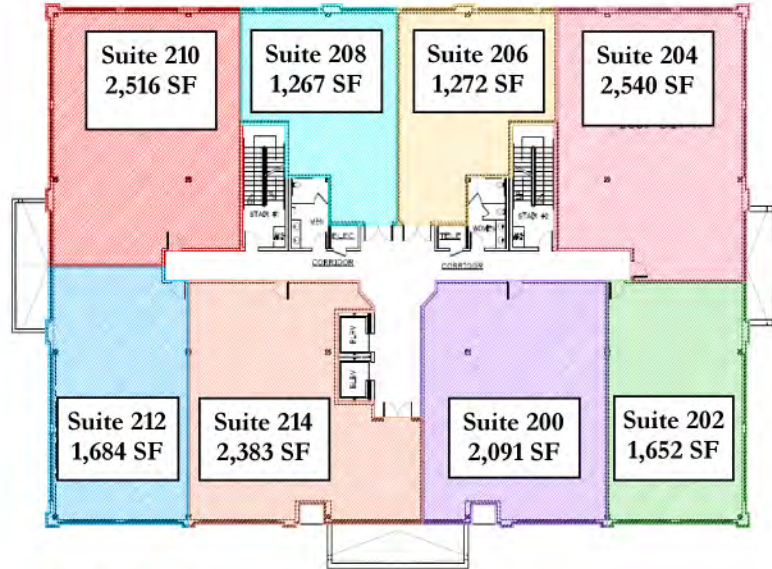


for additional property details, visit:
www.sandpiperprofessionalcenter.com

First Floor Plan



Second Floor Plan



Third Floor Plan



For more information, contact:
Christopher Smith, SIOR
csmith@trialliance.com
410.472.3510 x108

For additional property details, visit:
www.sandpiperprofessionalcenter.com

Information contained herein is believed to be accurate but is not warranted as to accuracy and may be changed or updated without notice.